

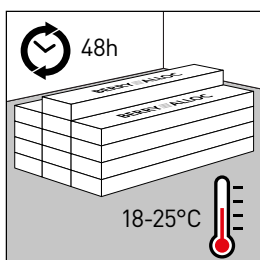
PURE INSTALLATION MANUAL

Pure Click 40 is an LVT floor, designed for use in residential areas.

Pure Click 55 is suited for both residential and commercial areas such as shops, hotel rooms, etc.

To obtain a perfect result, we recommend that installation instructions are followed carefully.

1. PREPARATION



TRANSPORT AND STORAGE

Transport your floor carefully on a flat surface. Planks should be stored flat in their packaging, in small neat piles, max. 5 boxes high.

It is important to store the planks for at least 48 hours at room temperature (18-25°C) before installation. This temperature should be maintained throughout the installation and for least 24 hours after installation.

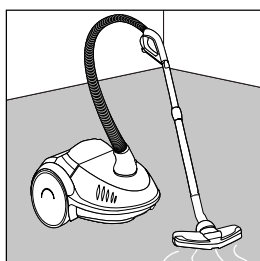
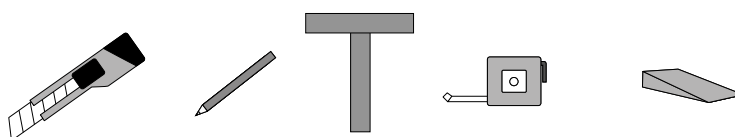
Storage: Pure must be stored inside.



TOOLS

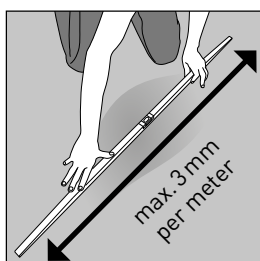
Trimming knife, saw or guillotine, pencil, T-square, measurer and spacers (wedges).

Additionally for skirting boards and profiles: power drill.



SUBFLOOR

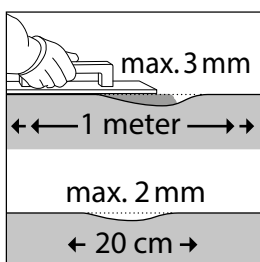
Careful subfloor preparation is essential for an excellent result. Roughness or unevenness in the subfloor (more than 3 mm per m) may telegraph through the new floor, resulting in an unsightly surface and causing excessive wear on high spots or indentation on lower spots.



Remove all traces of plaster, paint, glue, oil, grease, etc. The subfloor must be clean, flat, dry and stable. Remove textile floor coverings (such as carpet, needle felts, etc.) Remove all debris (including nails) and vacuum.

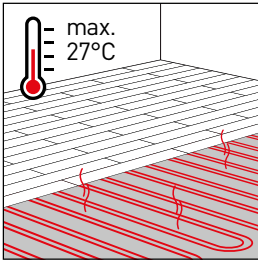
Pure Click can be installed on top of concrete, tiles, wood and most existing hard surface floor coverings, provided that the subfloor is smooth, dry and clean.

Although Pure Click is impervious to moisture, subfloors must be checked for moisture problems. If there is moisture, carry out sealing before installation. Excessive moisture can generate mould or fungus.



Make sure floor level deviation is a maximum of 3 mm per m, and 2 mm per 20 cm. If these margins are exceeded, the subfloor must be evened out with a suitable filler or levelling compound, and a check must be carried out to determine if a sealer is needed.

If you are not certain about the quality or suitability of your subfloor for the installation of Pure Click, then contact your dealer, who will be more than happy to help you.



Underfloor heating

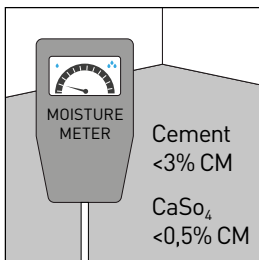
Pure Click is compatible with underfloor heating, provided that the heated floor temperature does not exceed 27°C

Only underfloor heating systems with heating components – hot water or electric – embedded in the floor are suitable. Heating films or other “new” systems that are placed ON the screed or subfloor are not suitable.

Pure Click is not suitable for reversible heating/floor cooling systems.

Switch off the underfloor heating 24 hours before installation and also during installation. After 24 hours of acclimatisation, increase the underfloor heating gradually by 5°C daily, up to a maximum floor temperature of 27°C. With electrical underfloor heating, we advise not to exceed 60W/m².

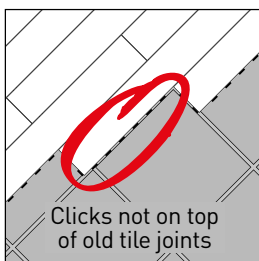
The subfloor construction (surface) of the heating system must be hard.



Preparation of concrete/screed subfloor

Let new concrete dry sufficiently. The moisture content of the subfloor must be less than 75 RH at min. 20°C. Max 3 % CM for cement and 0.5% for anhydrite. Where there is underfloor heating, moisture content should be less than 1.8 CM%, and 0.3 CM% for anhydrite. Always record and keep your moisture content results.

Repair surface imperfections with an appropriate repair compound and check if a primer or sealer is needed. Vacuum the subfloor afterwards to remove all debris.



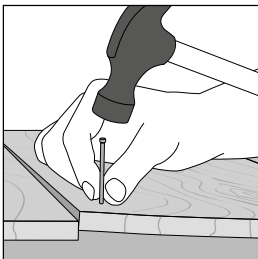
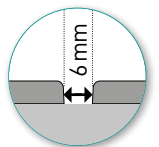
Preparation of tile subfloor

Check the subfloor for moisture problems.

The joints of the Pure floor covering should never be aligned with the underlying tile joints.

It is not necessary to fill the grouts of a subfloor comprised of ceramic tiles with joints when these do not exceed 6 mm in width.

When installing Pure Click on a tile subfloor, use the DreamTec+ underlay to overcome surface imperfections.

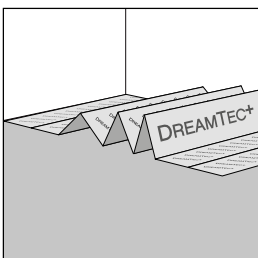


Preparation of wooden subfloor

Check the floor for insect infestations.

Make sure the subfloor is level and nail down loose sections.

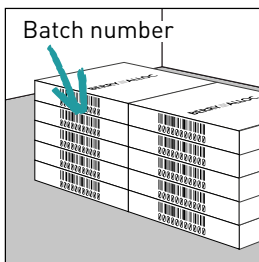
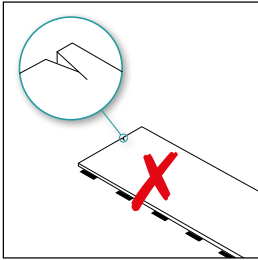
Wooden subfloors should always have access to air and should be ventilated.



UNDERLAY

We advise using the BerryAlloc LVT underlay (DreamTec+) to reduce walking and sound transmission performance. Other underlays risk causing openings in the joints or irreparable damage.

2. PRECAUTIONS



Pure Click is not suitable for outdoor use, solariums or saunas. Ensure that the indoor temperature is always kept above 0°C and ideally between 18 and 25°C.

Avoid long-lasting exposure to direct sunlight. Extreme solar radiation, heat and extreme temperature fluctuations can cause damage.

Check all planks for visible defects in optimal light conditions, both before and during installation. Planks with defects must not be used.

Make sure that you mix panels from different boxes, in order to minimize shade variations. This will ensure a more natural looking floor.

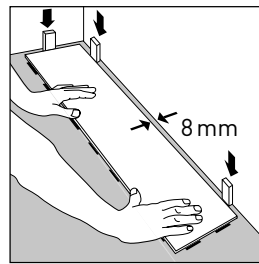
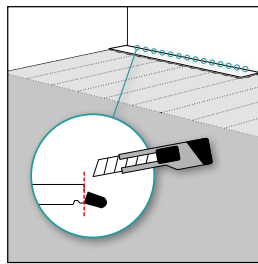
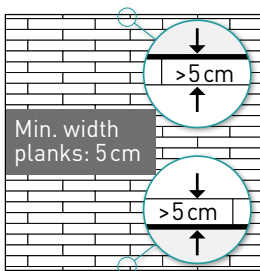
Pure Click cannot be used in areas where drainage systems have been incorporated into the floor. For tiles: use only a single production batch number for each installation. Always keep the production batch number (printed on the box), together with your order form/invoice.

3. INSTALLATION

Check that the floor planks have no visible defects before installing them.

Pure Click should be installed so that it is 'floating'. This means that there should be sufficient space between the floor and all walls or any fixed objects, so that the floor can move in any direction, i.e. it should not be screwed or nailed down to the subfloor.

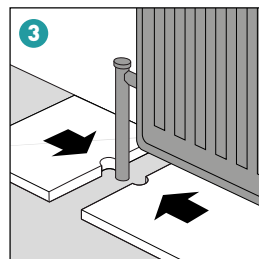
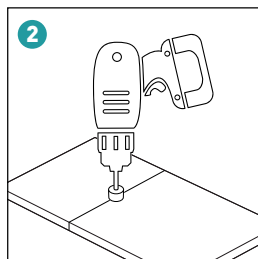
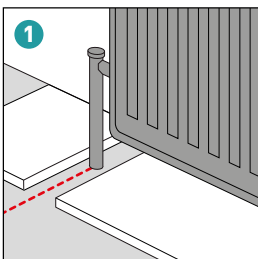
The installation of the floor must be the final operation in the project. Exceptionally heavy furniture, such as kitchen cabinets, fireplaces etc., cannot be installed on top of the flooring, as this restricts the floor's ability to expand.



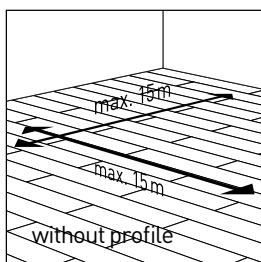
Measure the room to create a balanced layout. By measuring, you will be able to determine if the first row needs to be cut. The first and last rows should not be less than 5 cm wide.

If the first row of panels does not need to be trimmed in width, you must remove the locks on the side that faces the wall.

It is important to leave an 8 mm expansion gap around the total perimeter of the floor and around columns, pipes, thresholds etc.

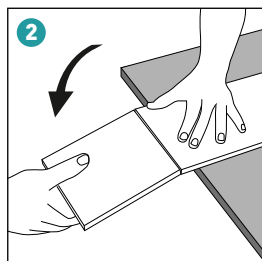
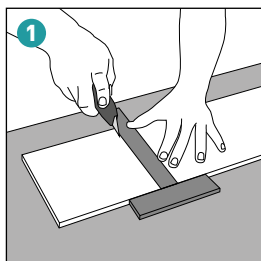


PURE



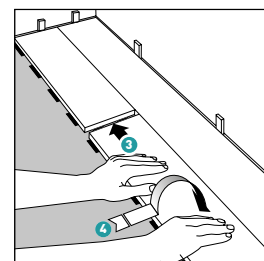
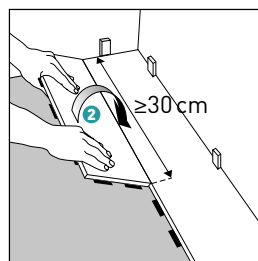
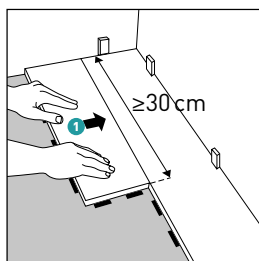
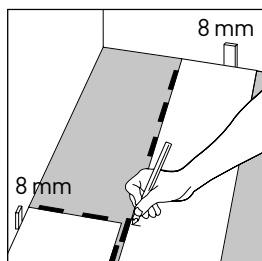
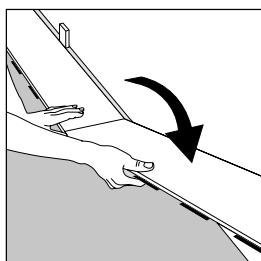
The largest recommended installation area is 15 x 15 m. An expansion profile must be used in door openings, and/or if the area is longer/wider than 15 m.

Make sure that you mix panels from different boxes, in order to minimize shade variations. This will ensure a more natural looking floor.



Do not use a hammer to put planks together. Cut boards with a Stanley knife, decor side up.

PLANKS

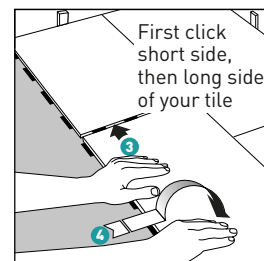
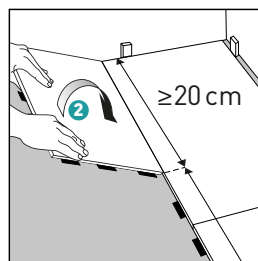
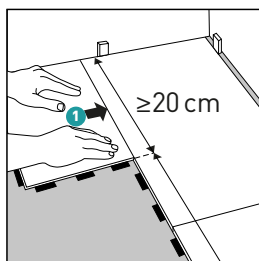
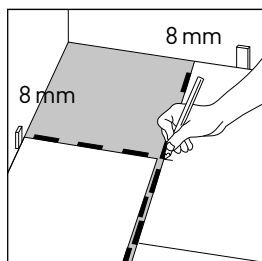
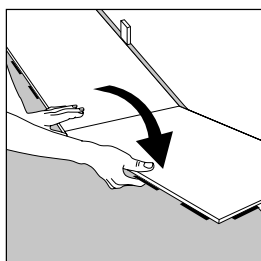


Always ensure that the short end joints are staggered by a minimum of 30 cm (= 3 click elements) when you start the next row. Use the leftover piece from the previous row as the first piece of the next row, provided that this piece is at least 30 cm long. In order to find a connection with the locking tabs of the previous row, it may be necessary to cut off an extra part of the leftover piece.



Pure Click planks can be installed in a variety of different patterns.

TILES

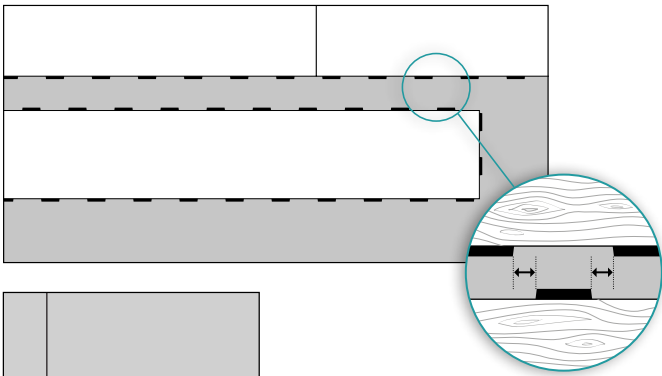


Always ensure that the short end joints are staggered by a minimum of 20 cm (= 2 click elements) when you start the next row. Use the leftover piece from the previous row as the first piece of the next row, provided that this piece is at least 20 cm long. In order to find a connection with the locking tabs of the previous row, it may be necessary to cut off an extra part of the leftover piece.

BERRYALLOC®

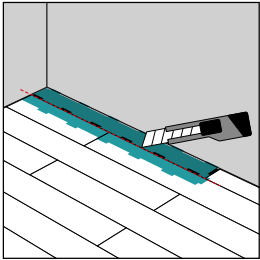
WWW.BERRYALLOC.COM

PURE



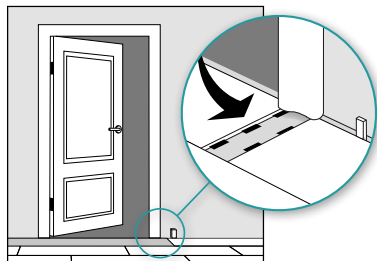
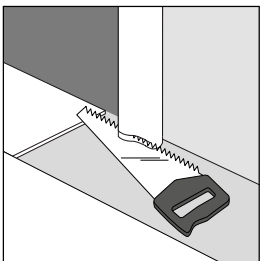
The click elements of the new row, need to be positioned, exactly in the middle of two locks of the previous row.

From second row on, always connect the short side first and then the long side.



To install the last row, position a loose panel exactly on top of the last laid. Place another panel upside down up to the wall and mark the panel underneath. Cut the marked panel to size and fit in place.

This method should be repeated for each panel until the last row is complete.



For doormouldings, lay a panel face down next to the door moulding. Saw the panel, then slide the plank under the moulding.

4. FINISHING

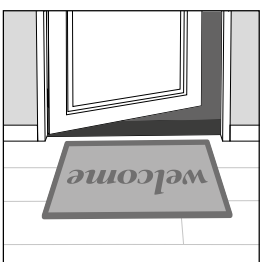


Use Pure Click accessories for a perfect result.

Never attach skirting boards directly onto the installed floor. Permanent sealing products (acrylic or silicone) should never be used to seal up the gap between the floor covering and skirting boards/profiles. Joints on fixed building elements (door frames, heating pipes, etc.) should never be completely sealed with elastic filler. You should use filler twine as a basis for filling expansion joints. Profiles, doorstops and suchlike should not be screwed through the floor covering into the subfloor.

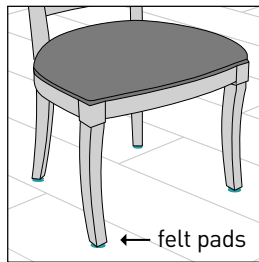
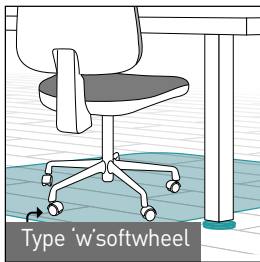
5. MAINTENANCE

Consider saving a few planks for any potential future repairs.



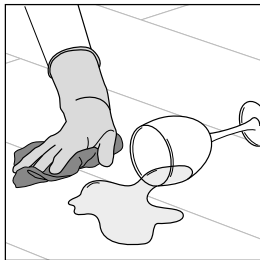
DOORMATS

To keep your floor in good condition, it is important to place non-rubber backed doormats at all entrances, to prevent dirt or grit on your floor. Placing doormats will eliminate abrasive particles driven by footwear and will reduce damage. Do not use rubber-backed mats, as long-lasting contact with rubber can cause permanent discolouration. Never place doormats on a wet floor.



Rolling office chairs, furniture legs, fitness appliances, etc. should be fitted with soft, non-rubber casters, to avoid permanent damage to your floor. Use a suitable desk mat.

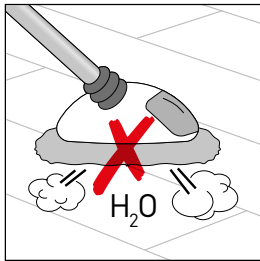
You should use felt pads or protective feet for items that contain rubber, such as chair legs, furniture legs, fitness appliances, etc.



CLEANING

Initial Cleaning

First remove all dirt and dust from the flooring with a brush or vacuum cleaner. Then clean with water and a neutral appropriate cleaning agent, at least twice and until the water stays clean. We strongly recommend using BERRYALLOC Vinyl Planks cleaning products. Any other cleaning product may contain agents that damage resilient floor surfaces. The coating of the top-layer makes a specific treatment after installation unnecessary.



Regular cleaning instructions

Vacuum or wet mop. When required, use a solution of clean water and mild detergent or domestic floor cleaning emulsion. We strongly recommend using BERRYALLOC Vinyl Planks cleaning products, as other products may damage your flooring surface. Do not pour water over the floor or leave a puddle of water on the floor. Rinse thoroughly and soak up residual water.

NB: the floor can feel more slippery when it becomes wet. Spots, marks and spillages should be wiped up as soon as possible.

Do not use chlorinated solvents. Never use wax or varnish coating.

Never use maintenance products that contain wax or oil. Never use a steam mop.

6. WARRANTY INFO AND CONDITIONS

Warranty for first user:

Pure Click planks are guaranteed under normal conditions of use against any manufacturing defects from their date of purchase to the original customer.

This warranty covers all abnormal degradation of this product, provided that Pure Click planks are installed and maintained in accordance with the instructions provided. This warranty covers the replacement of Pure Click planks determined as defective with equivalent- or similar-quality Pure Click planks from the product line existing at the time of the claim. This warranty does not involve a financial reimbursement under any circumstances, or the costs of removal or installation.

This warranty does not cover:

- Normal wear and tear
- Any mechanical damage or other alteration caused by use not in accordance with the BerryAlloc installation instructions
- The occurrence of accidents, misuse or abuse
- Damage caused by using incorrect cleaning methods or unsuitable detergents
- Damage due to heavy chairs or furniture: it is recommended that you use felt pads under chairs and furniture to reduce the possibility of surface scratching and marking
- Damage due to sand or grit: it is recommended that you use doormats on the inside and outside of all external doorways to prevent grit from being carried around across the floor
- Damage due to scratching
- Installation of any other pattern than those described under the point "Installation"

If you notice a defect, contact your dealer within two weeks with your original purchase receipt.
For more information: www.berryalloc.com

7. LEGAL INFORMATION

This document presents the general installation instructions, based on the latest available information. For the best result, and to ensure the validity of the guarantee, these instructions should be followed carefully.

This document replaces all previous versions and is valid until further notice. This information is a representation of the technical know-how at the time that this document was produced/published and may be amended, complemented or replaced at any time. Please check for updates at: www.berryalloc.com